

# 2017-18 AEMI Program Data

In the 2017-18 school year,  
AEMI served:

**8,447**  
STUDENTS



ARTS-  
EMPOWERED  
MINDS  
ARTSEMPoweredMINDS.ORG

## SCHOOLS

BELLE GROVE ELEMENTARY  
BROOKLYN PARK ELEMENTARY  
BROOKLYN PARK MIDDLE  
FERNDALE EARLY EDUCATION CENTER  
GEORGE T. CROMWELL ELEMENTARY  
HILLTOP ELEMENTARY  
LINDALE MIDDLE  
LINTHICUM ELEMENTARY  
NORTH COUNTY HIGH  
NORTH GLEN ELEMENTARY  
OVERLOOK ELEMENTARY  
PARK ELEMENTARY



**234**  
TEACHERS

through the following programs:



**234**

Days of Embedded  
Professional  
Development



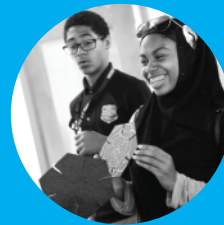
**11**

Family  
Engagement  
Events



**17**

Assembly  
Performances



**8**

After School  
Clubs



**7**

Student  
Field Trips

# SPOTLIGHT ON BELLE GROVE ELEMENTARY!

*Highlighting some of the phenomenal programs that have taken place at Belle Grove since it became an AEMI school in 2016!*



## **FAMILY TREE MURAL** with Maura Dwyer, Visual Arts Teaching Artist

Fifth-grade students worked with mural artist Maura Dwyer as part of a Teaching Artist Institute (TAI) residency to design a legacy mural for the school Media Center.

Maura and her teacher partner, AEMI teacher liaison Betsy Brininger, assisted students in creating the mural: a family tree with interchangeable leaves sprouting from long, reaching limbs.

The students interviewed and researched family members, wrote poetry, and created symbols representing what they learned about themselves and their families for each individual leaf. The interchangeable leaves were designed so that they can even be switched out with each new school year to reflect the current students!



## **THE POWER OF UNITY** with Valerie Branch, Dance Teaching Artist

Valerie Branch completed residencies with students in grades 2–4 two consecutive years in a row at Belle Grove. In the 2017-2018 school year, students learned skills of collaboration, trust, and teamwork by choreographing short dance studies that incorporated frozen poses with the use of negative space, weight sharing, and weight bearing. During this school year, Ms. Branch built upon her first residency by asking students to compose empowering, self-identity poems about themselves.

*“My name is Emely  
I am smart and creative  
I pretend to be an astronaut”*

These poems were then used as a catalyst to create a solo performance using frozen poses, locomotor, and non-locomotor movements. Students then shared their choreography with another student to see what their movement would look like from a different perspective/point of view.



## **LIGHT PAINTING LAB** with FutureMakers, Visual Arts Teaching Artists

Through this multi-day workshop, students in grades 2–5 explored the connections between light, time, and space and learned how digital sensors see: in four dimensions! Using LED's, batteries, and conductive materials to construct glowing “brushes,” students created glowing digital photos through the use of long-exposure techniques.

*Moving from Student Experience to Professional Development:* To provide opportunities for ALL Belle Grove teachers to use these tools in their own classrooms, AEMI Teacher Liaison, Betsy Brininger, secured funding to purchase the “Light Painting Lab” equipment for the school. Additionally, Ms. Brininger arranged for Young Audiences to videotape a teacher training video with FutureMakers to document how to use the new equipment!